

iEnglish

**VIEWING, LISTENING, AND
SPEAKING**

Unit 1 Campus Culture

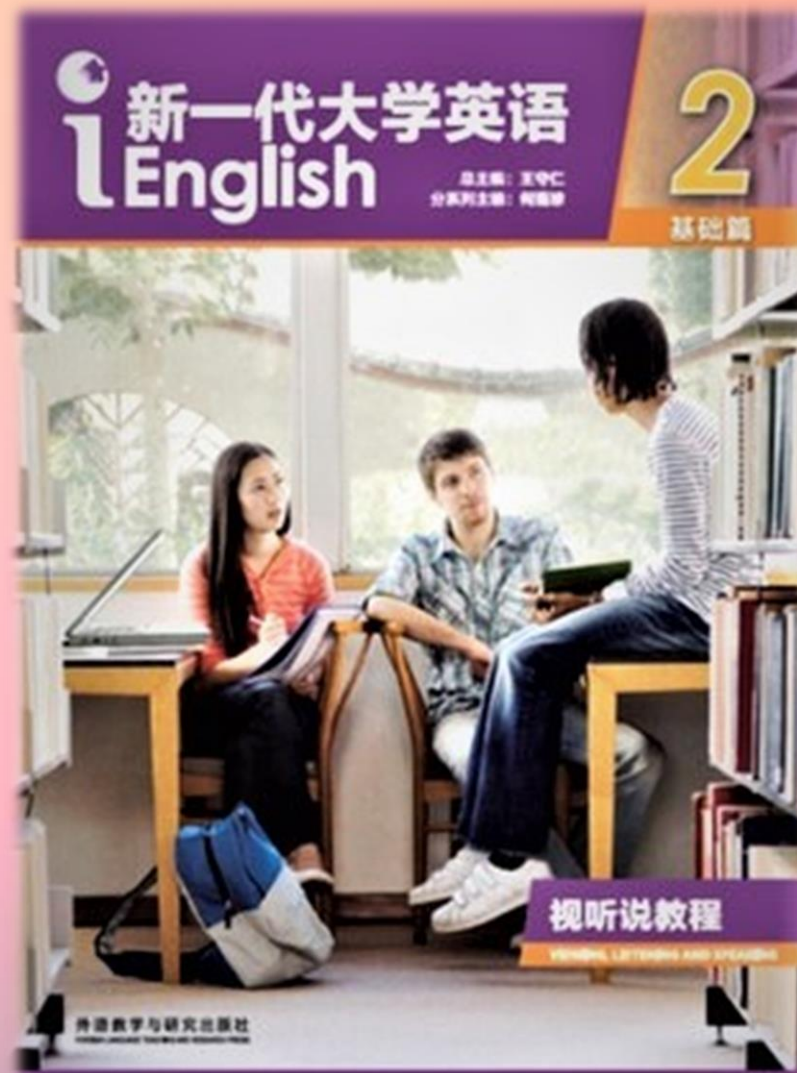
Outline

I Teaching Context

II Teaching Methodology

III Highlights of Demo Class

IV Demo Class



I Teaching Context



I Teaching Context

Ignite Passion

II Teaching Methodology

“不愤不启，不悱不发。举一隅不以三隅反，则不复也。”

Heuristic Teaching

—孔子

II Teaching Methodology



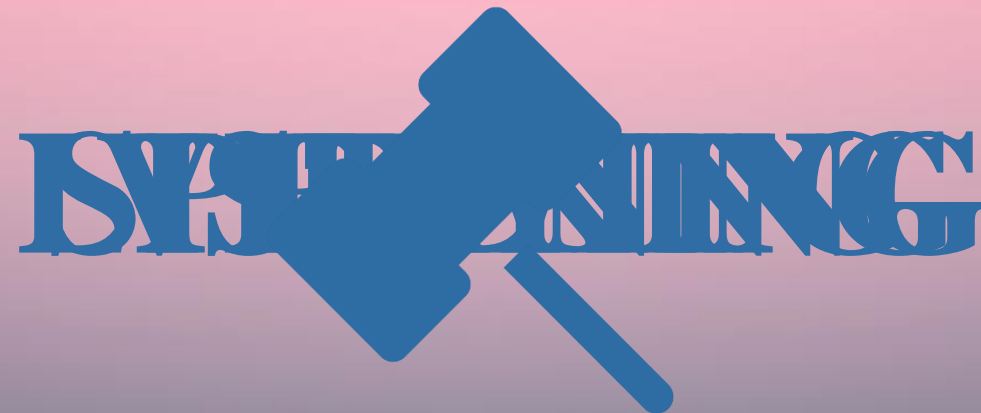
what



how



why

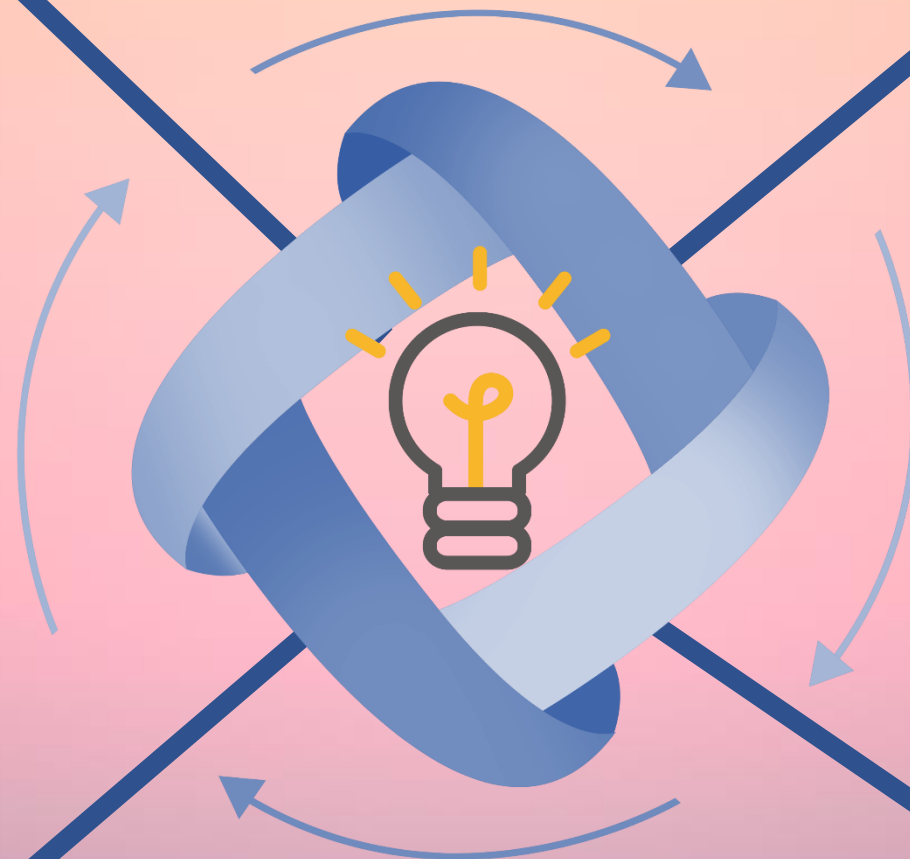


infer

sense

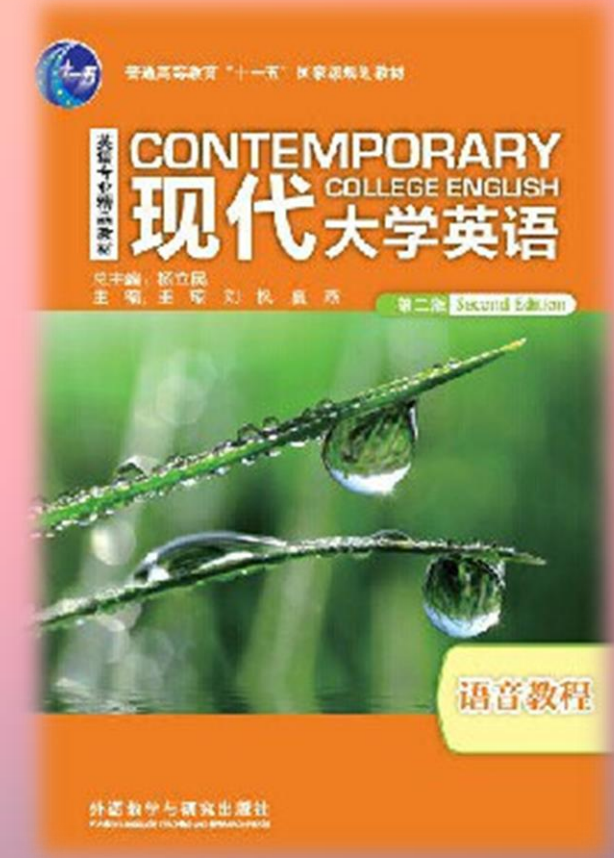
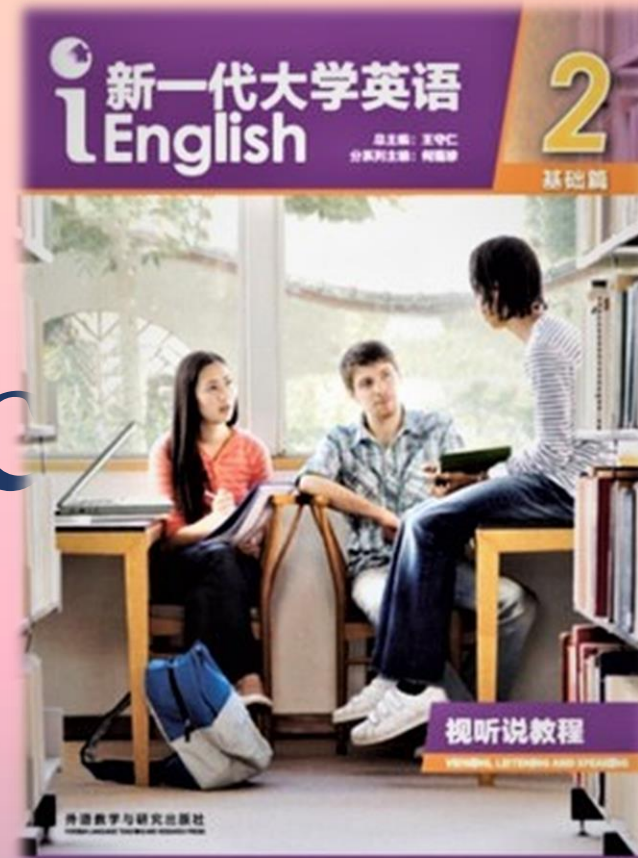
generalize

compare

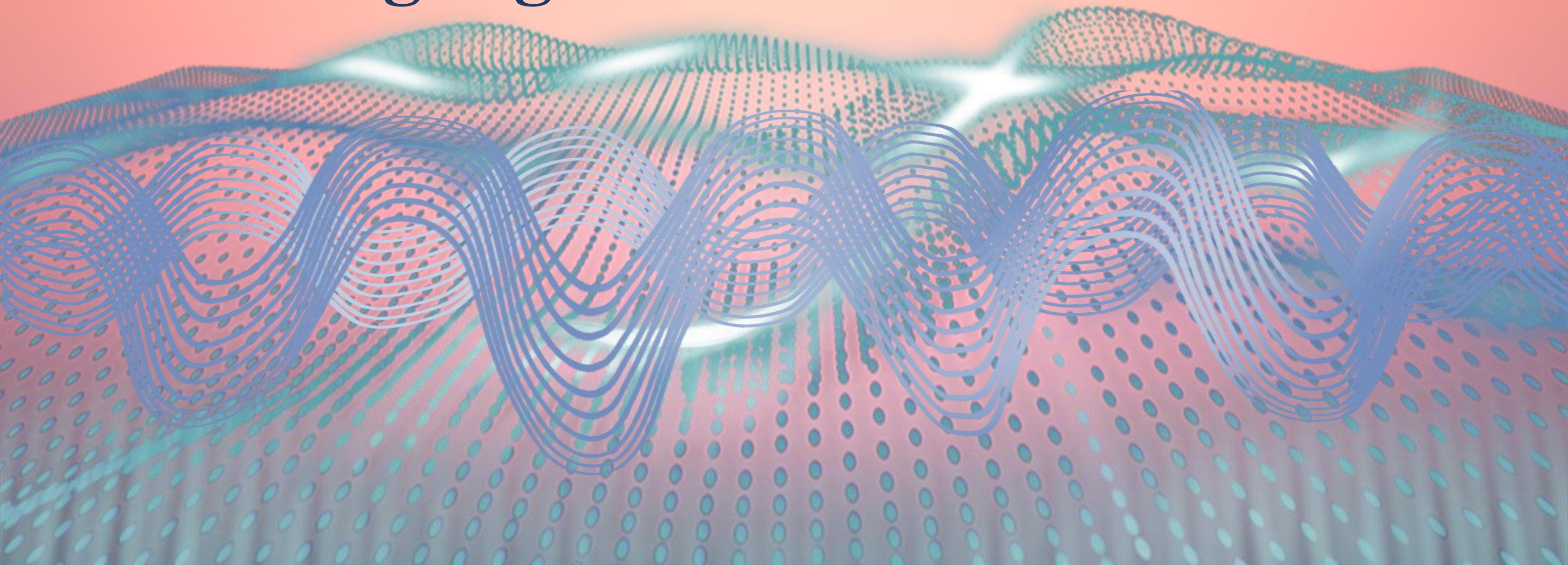


III Highlights of Demo Class

Cross-c



III Highlights of Demo Class



III Highlights of Demo Class



III Highlights of Demo Class

Intuitive ~~people~~ learning
experimentally



Speak Naturally

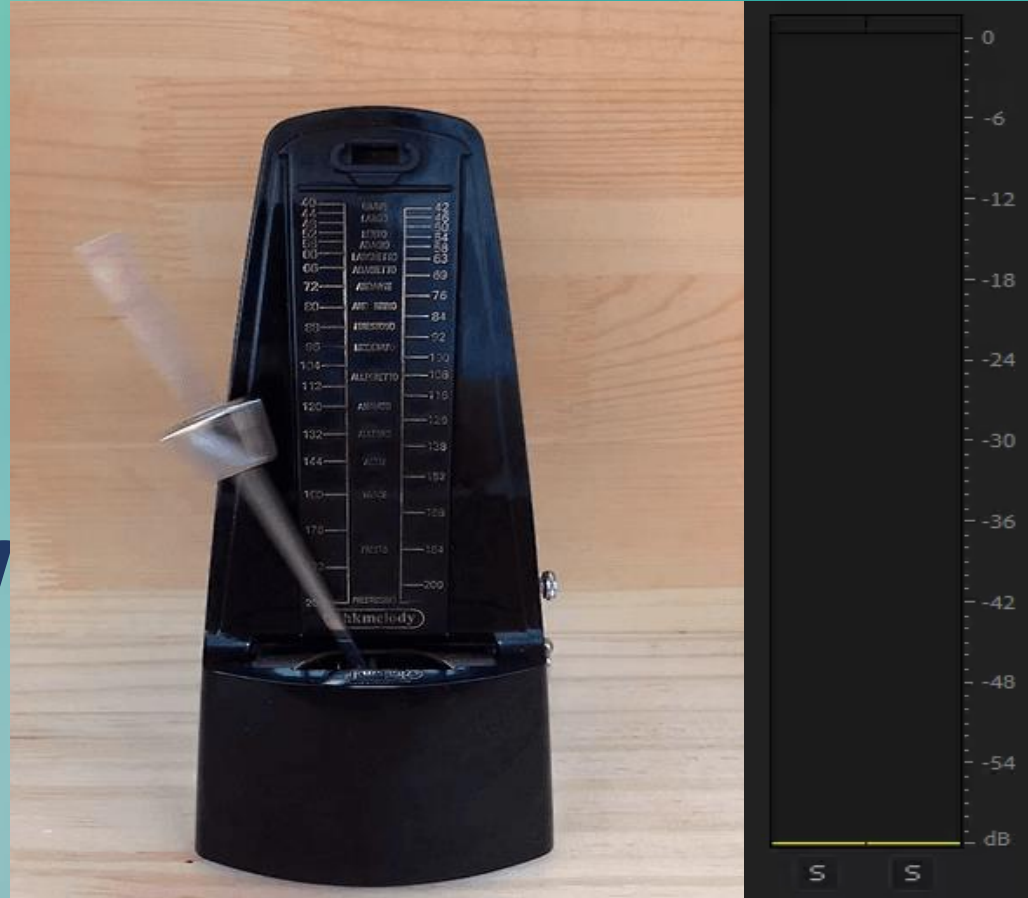
One, two, three, four.

One , and

e, and a four.

One, and then a tw

ee, and then a four.

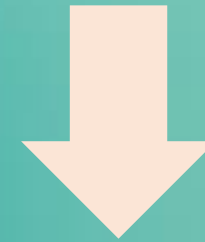


One, and then a two, and then a three, and then a four.



**Louder
Longer
Higher**

**Volume
Duration
Pitch**



**?
?
?**

Natural Pronunciation

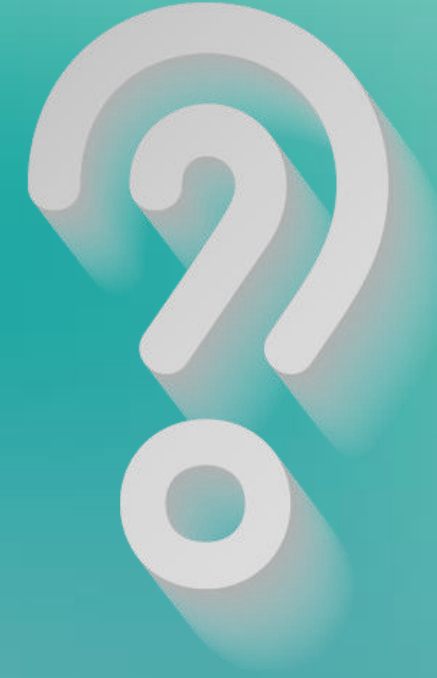
Series 2 Unstressed Words

Start from contractions with “will”

Unit 1 Campus culture
iPractice: Pronunciation
Page 11



Read Out



Know How

Unit 1 Campus culture

Contraction

iPractice: Pronunciation

Page 11

They will We'll It'll

They'll We'll It'll

Vowel + 'll =

/ɪ/ /e/

Consonant + 'll =

A large word cloud in the shape of a question mark, composed of various interrogative words. The most prominent words are "WHAT", "WHERE", "WHICH", "WHEN", "HOW", "WHY", "WHO", "WHOM", and "WHOSE". The words are arranged in a way that they fit together to form the overall shape of a question mark.

A word cloud in the shape of the letter 'H', composed of various interrogative words. The most prominent words are "HOW", "WHY", "WHICH", "WHOSE", "WHAT", "WHERE", "WHEN", "WHO", and "WHOM". The words are arranged in a way that they fit together to form the overall shape of the letter 'H'.

A word cloud in the shape of the letter 'W', composed of various interrogative words. The most prominent words are "WHY", "WHOM", "WHAT", "WHERE", "WHEN", "WHO", and "WHICH". The words are arranged in a way that they fit together to form the overall shape of the letter 'W'.

Contraction

Q1

I will

I'll

apostrophe



/aɪ/

/wɪl/



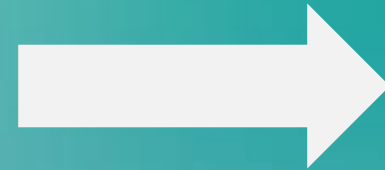
/aɪl/

What are the phonetic rules of
phoneme contraction?



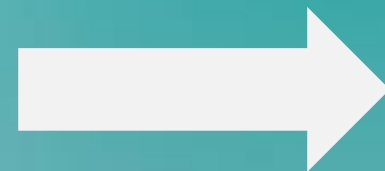
Contractions

I **a**m



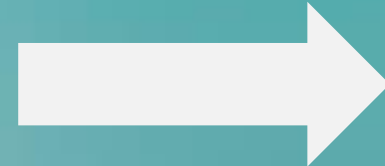
I'**'**m

must **h**ave



must'**'**ve

of **t**he clock



o'**'**clock

Q2

It will be



Why do we use the
contraction?

It'll be

Q3

Conjunction	Preposition	Special Verb
and as than	for from of	do have should
Pronoun	Article	
the his us	a an the	/ə/

It will be totally his fault.

What types of words can be weakened like this?

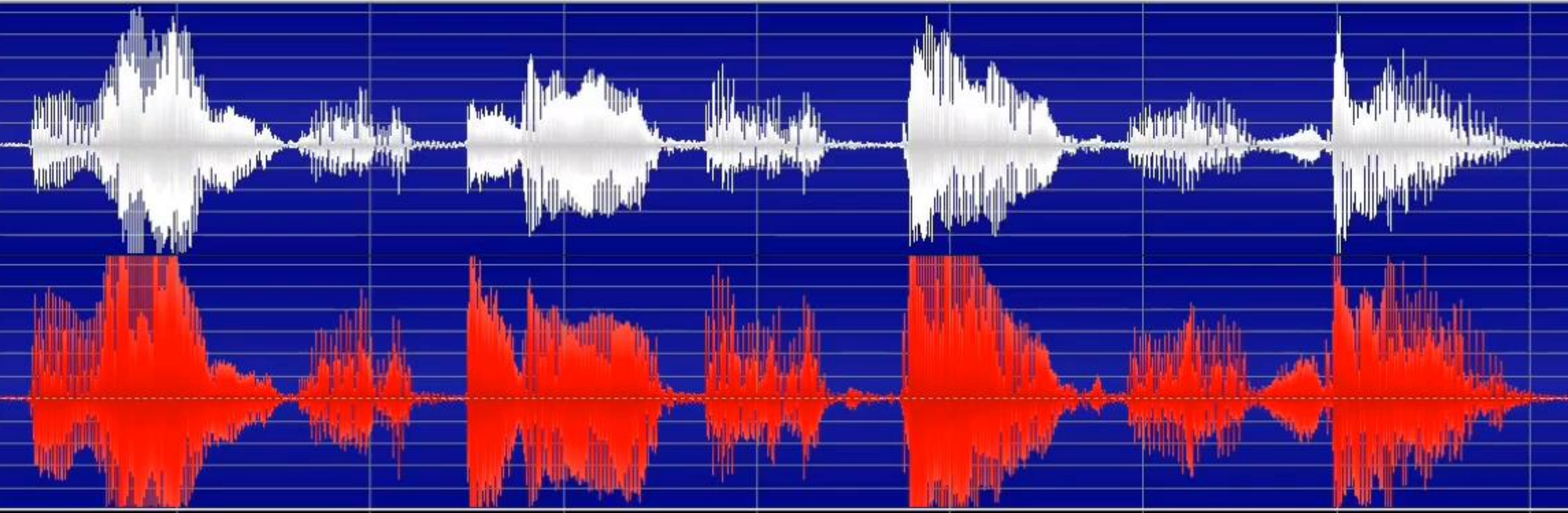
What is schwa?

/ə/

The mysterious unstressed vowel
sound explained.

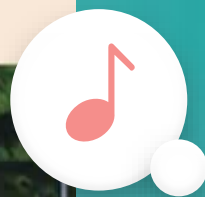
/ ən then ə /

One, and then a two, and then a three, and then a four.





Campus
culture



Dwelling on the **past**,
from **back** when I was **young**
Thinking of my **school** days,
and **trying** to write this **song**



**Think about the ideal campus culture
and share with us orally.**

